

NEWSLETTER

October/November 2014

www.southernceramicgroup.co.uk/

Email : info@southernceramicgroup.co.uk

Contents

- **Bishop's Kitchen**
- **What's On**
- **Pottery Profile**
- **Demonstrations**
- **Group & Members News**
- **Pit Firing**
- **Courses**
- **Glaze Group**
- **SCG Committee**

Editorial

It is interesting to note the value that people apply to ceramics. On exhibiting at a recent general fair I was struck by the fact the people would gladly exchange money for a very dodgy looking burger but would agonise over spending a similar amount on a handcrafted piece of pottery. Maybe a case of need to have rather than nice to have but strange nevertheless. Of the 12,000 or so customers who passed the stall a few were very enthusiastic and keen to engage, and in some cases even buy. However, the reality is that we operate in a niche area and it is only through promotion of studio pottery that an increased appreciation can be secured. This is where the SCG can really have an impact and as the group grows hopefully so to can our influence and appreciation of the practice.

Keith Menear

2014 Summer Exhibition at the Bishop's Kitchen

On behalf of the Committee I would like to pass on a big thank you to John Evans and the team for organising yet another very successful event at the Bishop's Kitchen in Chichester this year. Although the overall sales were lower than our bumper bundle year of 2013, we still sold a magnificent nearly £9000 worth of ceramics.



I am also delighted to announce that Kevin Akhurst has agreed to take on the Exhibitions Coordinator role and has joined the SCG Committee. We are hopeful that the Bishop's Kitchen will once again be available for 2015 as it is now likely that the planned refurbishment works to the room are possibly delayed until after that date.

Rolf Hawkins
SCG Chair

What's On

MADE BRIGHTON takes place between the 21st and 23rd November in the Corn Exchange, part of the Dome Complex by the Royal Pavilion

<http://www.brighton-made.co.uk/>

Craft In Focus Sevenoaks School, TN13 1HU

From 24th - 26th October 2014

12 noon to 5pm Friday; 10am to 5pm Saturday & Sunday.

A range of quality handcrafted work including ceramics.

http://www.craftinfocus.com/sevenoaks_october_14.html



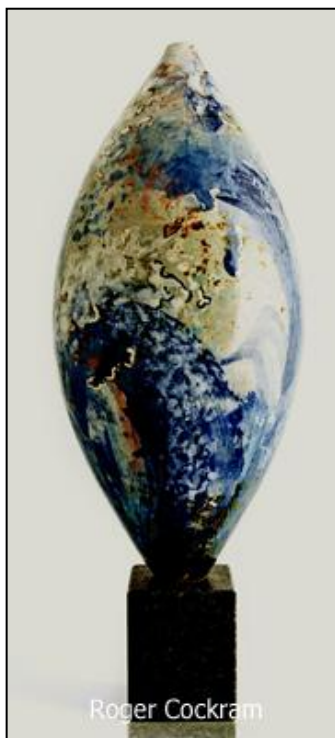
Elaine Bolt Ceramics

Craft In Focus RHS Wisley Gardens — nr Woking, GU23 6QB

From 25th - 30 November 2014

Craft in Focus brings more than 100 of the finest British craftspeople to Wisley for a special six-day pre-Christmas shopping opportunity. Beautiful handcrafted gifts will be on sale in the special marquees outside the garden.

http://www.craftinfocus.com/wisley_november_14.html



Roger Cockram

18th Art in Clay Farnham Surrey GU9 7QR 15th 16th November 2014

The 18th Art in Clay Farnham takes place in November. There will be a range of work from newly qualified artists working in clay to potters with many years of creative work behind them. From animal sculptures to kitchen and garden pots with a variety in between to interest anyone that enjoys skilfully crafted objects.

<http://www.artinclay.co.uk/home/farnham>

What's On



Oxford Ceramics Fair 25th-26th October. More than 60 of the UK's leading potters will be exhibiting and selling their ceramics at the Oxford Ceramics Fair 2014. Now in its 15th year, the event is again to be held at St Edward's School, Woodstock Road, Oxford on Saturday and Sunday the 25th & 26th October between 10am - 6pm (Saturday), 10am - 4.30pm (Sunday).
St Edward's School is just over a mile from the centre of Oxford

Visitors will be able to meet the country's leading potters, buy their work, and watch a full programme of demonstrations and lectures covering many aspects of studio ceramics creation and production.

<http://www.oxfordceramicsfair.co.uk/oxfordceramicsfb.html>

International Ceramics Festival Aberystwyth Arts Centre, 3rd-5th July 2015

Tickets for the 2015 festival will be on sale from 1st November 2014

Weekend tickets will give you free admission to all demonstrations, lectures, slide-shows, seminars and exhibitions, a souvenir programme and the Saturday evening entertainment with live music. A limited number of day tickets are also available for Saturday and Sunday <http://www.internationalceramicsfestival.org/>

Making Merry at the Studio, Evergreen, Trampers Lane, North Boarhunt, Hants, PO17 6BU

Private View 2 to 8pm Friday 14th November (all welcome!)

Exhibition then continues to Sunday 23rd November open daily from 10am to 5pm.

Christmas Themed selling event.

Jan Griffiths - Ceramics

Dee McNamara - Contemporary Fused Glass

Allison Bevis-Cronk - Ceramics

Maggie Cochran - Felted Organza and other textiles

Lucille Scott - Blacksmith

On-site parking/seasonal refreshments

Jan Griffiths

01329 833124

griffiths.jan@btinternet.com



Pottery Profile : Amberley Museum Pottery

Amberley Museum and Heritage Centre is situated in the heart of the South Downs National Park near Houghton in West Sussex. The museum was founded in 1979 by the Southern Industrial History Centre Trust and has previously been known as the Amberley Working Museum, Amberley Chalk Pits Museum or plain Amberley Museum.

It is a 36 acre open air museum next to Amberley railway station, dedicated to the industrial heritage of South East England and includes a number of traditional crafts people including a blacksmith, wood turners and pottery.



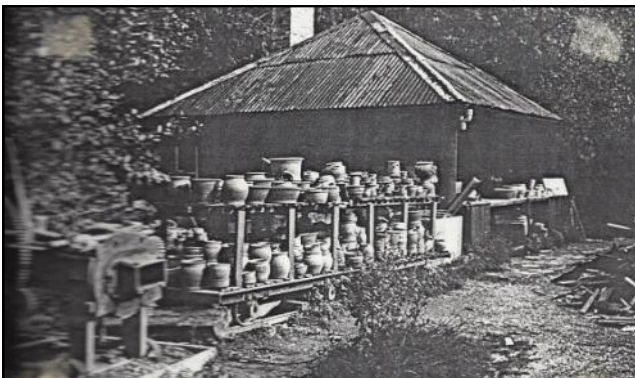
The museum is sited in a former chalk quarry where from the 1840s to the 1960s the chalk was converted into lime for use in mortar and cement and remaining on site are several kilns, including a De Witt set, and associated buildings including offices, bagging shed and locomotive shed. A century ago the lime works was one of the largest in the region



Tim Stampton throwing on his home made wheel

In line with the ethos of the museum, the craft of pottery has been practised on the site since its inception. One of the first potters was Tim Stampton who worked in what is now a large barn exhibiting the history of brick making in the area. Tim's work was very much in the tradition of the country potter where he would process clay in the autumn to weather and breakdown in the winter followed by pug milling and use in the spring. The work produced by the pottery was domestic and mostly thrown on a hand made momentum wheel that Tim built himself and which can still be viewed at the museum today.

The kiln on site is a downdraught type built to a Victorian design, with fireboxes arranged at two points on the perimeter and each with its own separate bag wall.



Work stacked onto trolleys ready for firing in the kiln

Pottery Profile : Amberley Museum Pottery

In 1985 a purpose built pottery barn was constructed on site which allowed for a much better viewing experience for the public and a more modern working environment for the potter. A number of potters have since taken up residency including Kitty Sheppard and Tilly Mellor. Since Easter of this year we have taken over management of the studio with all the challenges that this entails.

Our day usually starts with and setting up for any special events and opening the pottery for the public. The pottery is in the centre of the site and visitors tend to arrive late in the morning so any work that needs concentration is usually done then. The two electric kilns are run almost back to back so need filling and emptying and the retail area is always in a constant need of cleaning from the inevitable dust and cobwebs (it is a barn!).



Having worked (in solitude) from our home studio for the last 6 years, one of the big changes for us has been engagement with the public on a regular basis. On the most part, this has been a positive experience, but profanity has had to be tempered. Taking on the pottery has enabled us to broaden our range of work. Traditionally much of the pots generated at Amberley has been slip decorated and we continue to produce pieces in this style to maintain continuity with the Potters that have gone before. We have also started to run courses now that we have more room, and this has brought an added dimension to the business. In addition we have access to a large outside area where kids of all ages can experience working with clay as we operate a “Play with Clay” session daily and this has been great fun over the summer.

The pottery barn celebrates its 30th anniversary in July 2015 and we, together with the museum, are busy planning a pottery festival. We hope to run the event **4th-5th July** and would really love members of the Southern Ceramic Group to participate and we will circulate more details in the New Year.



Keith & Debbie Menear

Menear Ceramics

Demonstrations

A Demonstration of ‘Ceramic Printing’

Kay Aplin on 19 October 2014 at Petersfield Community Centre 9.30 for a 10.00 start to finish at 4.30

Kay is an architectural ceramicist with a background in site-specific work for the public realm. She graduated in Public Art and Design from Chelsea College of Art in 1995. Since then, she has had many commissions around the UK and internationally, producing a distinct range of art works that have stood the tests of weather and time.

Kay will give an illustrated talk about her work and review ways of transferring images and decorations onto ceramics, including relief techniques, mono printing, and computer generated decal printing.



Hands On

During the afternoon there will be the opportunity for a short hands-on session. For those wishing to take part in this, please bring a small quantity of clay and a board to work on.

Bring a contribution for an “American Supper” type lunch, a cup, plate and knife and fork, etc. Coffee and Tea will be provided



More details about Kay Aplin, BACS payment, and a map of Petersfield Community Centre, are to be found under "Events" on the SCG web site. Any questions to zyg@kruk.co.uk

Please note that this demonstration is open to non-members

Registration Form

Please complete and send with a cheque for £ 20.00 per person, (£25.00 non-members) made payable to Southern Ceramic Group, to Zyg Kruk, 30 Wittering Rd, Hayling Is.Hants, PO11 9SP

Name.....Membership Number.....

Signature E Mail.....Date.....

Zyg Kruk

Group & Members News

New Members

A very warm welcome to new member:

Rebecca Gardiner of Bognor Regis

This gives a total of 119 current members

Interested in becoming a member of the Southern Ceramic Group?

Application forms can be found on the group website at:

<http://www.southernceramicgroup.co.uk/Information/SCGMemberApp.pdf>

Next Committee Meeting. The committee meets every few months or so and our next meeting will be on the 8th January 2015. If you have anything you would like to bring to our attention please contact Sandie Dixon 2sandie@tiscali.co.uk or any other member of the committee.

AGM. Please note in your diary that the next AGM is provisionally booked for **25th January** at the Portchester Community Centre

Heritage Craft Association. This Association aims to represent craft persons in the UK at the level of government ministers and policy makers. Through their affiliated organisations, they represent 33,000 craftspeople. They campaign to retain crafts as “creative” and to ensure the development of generic craft qualification to enable all crafts to benefit from government funding for training. At the last Committee meeting it was agreed that the **SCG should become an Affiliated Organisation** of the Heritage Craft Association for £40 a year.

Annual Ceramic Award 2014

The Annual Ceramic Award is open to all potters and ceramists and is not restricted to associates, members or fellows of the CPA.

The Annual Ceramic Award is funded through various sources and the money raised from the Tombola at this year's Earth & Fire at Rufford will be used to assist recent ceramics graduates. The Trust would like to express its gratitude to all the potters who make the Tombola possible through their generous donations of work.

Guidelines for applicants are available e mail johnceramics@aol.com johnhigginsceramics@gmail.com or send a stamped addressed envelope to:

John Higgins
Secretary to the Craft Pottery Charitable Trust
32 Seaman Close
Park Street
St, Albans
Hertfordshire AL2 2NX

The closing date for applications is 15th December 2014

Liz Gale

Pit Firing : Anne Lovejoy

Many thanks to Anne Lovejoy for her generous donation of £100 to the SCG after her recent Pit and Raku Firing event run from her home in Amberley. It was a lovely day with about 30 enthusiasts attending including several group members. The pit was so hot and still flaming at the end of this wonderfully sunny day, probably due to the huge pieces of wood used, that a decision was made to close it up all leave to cool until the next morning. There were some lovely results and big smiles all around!

Jan Griffiths



Courses



A number of Southern Ceramic Members offer pottery courses across a range of abilities and ceramic disciplines. These include, amongst other things, tuition on wheel throwing, sculpting, hand-building and raku firing.

You can now find a list of course providers on the Southern Ceramic Group website where they can be contacted directly.

Any members providing courses who would like to be included on the list should contact Tony Thompson.

<http://www.southernceramicgroup.co.uk/Information/training.htm>

Keith Menear

Glaze Group Meeting

Glaze Group Meeting held at Marigo Harries home on Tuesday 13th May 2014

Present: Anne Smith, Barbie Plastow, Charles Stileman, John Howell, Marigo Harries, Tim Thornton

Topics of discussion included the following: Glazing procedure used for a small earthenware pot decorated with sharply defined irregular edges brought by John was discussed. Suitability of wax resist for masking sharp edges was discussed. Tim brought for discussion a beautiful tall earthenware jug with complicated masked patterns made by Richard Phethean.

Pots made by Tim using cryolite over earthenware fired to 1220 deg C had given interesting raku like effects. A wood fired jug made by Svend Bayer brought by Charles prompted discussion about handles pulled straight from the pot.

Barbie showed us an amazing tall crystal glazed bottle made by Bill Boyd, Galiano Island, Vancouver BC. She produced results of her experiments with Charles' artificial wood ash glazes giving blues and greens over oxide slips.

Charles produced a homemade hydrometer he uses for controlling thickness of glaze slop. He also weighs a litre of slop in grams per litre adjusting to about 1600gm/litre for wood ash. An alternative method suggested was to measure the weight of the glaze in a syringe. Tim's method is to pour the slop through a special container and measurement of the time taken gives an indication of glaze thickness.

It was suggested that at future meetings we should share our experiences by members giving demonstrations of their own procedures.

Glaze Group Meeting held on 9 September 2014

The glaze group met at Tim Thornton's house near Stockbridge on 9th September.

Tim showed us the experiments he had been doing with barium based glazes, in particular the large test tiles he has made, each with a series of line blends using different materials. He then showed us some pots he had made in a recent Raku firing.

We also looked at a yunami made by Mike Dodd; and a slipped, salt glazed vase by Danish potter Dörte Ahrenkiel. John Howell brought along some gadgets for throwing he had made, and a discussion followed on various hints and potters tips that might be useful.

Meetings are normally held on the second Tuesday of alternative months and anyone is welcome to attend.

Please let Charles Stileman (charles@charlesstileman.plus.com) know if you are coming.



John Howell

SOUTHERN CERAMIC GROUP COMMITTEE**Chair**Rolf Hawkins **Tel** : 01962 869117**Email** : rolf.hawkins@winchester.anglican.org**Vice Chair & Marketing**Jan Griffiths **Tel** : 01329 833124**Email** : griffiths.jan@btinternet.com**Hon Sec**Sandie Dixon **Tel** : 02380 550064**Email** : 2sandie@tiscali.co.uk**Treasurer**Liz Gale **Tel** : 02392 632686**Email** : lizgale@interalpha.co.uk**Demonstrations**Zyg Kruk **Tel** : 02392 469104**Email** : zyg@kruk.co.uk**Membership**John Howell **Tel** : 02380 618165**Email** : john.f.howell@talktalk.net**Website**Tony Thompson **Tel** : 01489 572115**Email** : apttony@aol.com**News letter**Keith Menear **Tel** : 07788908182**Email** : keith.menear@hotmail.co.uk

NEXT COPY DEADLINE : 17th November 2014

Please send contributions to : keith.menear@hotmail.co.uk

Next Newsletter due : 1st December 2014

Would you like to advertise in the Southern Ceramic Group Newsletter?

If so please contact Rolf Hawkins

email: rolf.hawkins@winchester.anglican.org

The rates for advertising are:

SCG Members : FREE

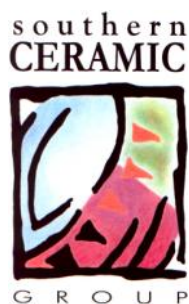
Commercial Advertising Rates: B&W Colour

Full Page £20

Half Page £10

Acknowledgments

Thanks goes to regular contributors to the Newsletter; *Diana Wren, Martin Eastabrook* and for editorial assistance *Marigo Harries*



The **Southern Ceramic Group** grants permission for the browsing of this material as part of the World Wide Web and for the printing of one copy per person for personal reference only. The express permission of the Southern Ceramic Group and the originating artist must be obtained for any other use of this material.